

## Step-By-Step Plant Diagnostics

### The University of Wisconsin-Madison Plant Disease Diagnostics Clinic

Brian D. Hudelson

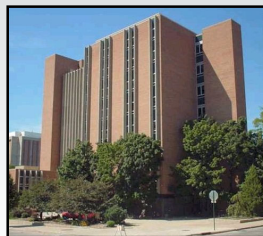
Department of Plant Pathology

University of Wisconsin-Madison/Extension



1

## The UW-Madison PDDC Location



- Russell Labs
- Labs: Rm. 183, Rm. B37
- Office: Rm. 290

2

## The UW-Madison PDDC Staff

- Brian Hudelson (Director/Diagnostician)
- Dante Tauscheck (Assistant Diagnostician)
- Dixie Lang (IT/website/social media support)



3

## The UW-Madison PDDC Diagnostic Services

- Sample types
  - Digital photos
  - Physical samples
- Diagnostic methods
  - Classical (culturing, moist chambers, microscopy, bioassays, etc.)
  - Serological (dip sticks, ELISA)
  - Molecular (PCR, DNA sequencing)
- Reporting methods
  - Email (digital photos)
  - Written report (physical samples)
  - Phone (critical diagnoses)



4

## The UW-Madison PDDC Diagnostic Fees

- Digital diagnosis: \$25
- Physical sample base fee: \$30
- Culturing fee: \$5 per medium per plant part
- Serological test fees
  - Dip stick: \$12
  - ELISA: \$40
- DNA/RNA test fees
  - \$40 for the first PCR reaction (includes extraction costs)
  - \$20 for each additional PCR reaction
  - \$40 for DNA sequencing



5

## The UW-Madison PDDC Diagnostic Fees

- Free diagnostics: \$0
  - High economic impact disease samples: late blight
  - New and emerging/regulatory disease samples
    - Boxwood blight
    - Red star rust (Japanese apple rust/lipstick rust)
    - Sudden oak death/Ramorum blight
    - Ralstonia wilt
  - Needs-based samples
    - Individuals
    - Schools
    - Non-profits
  - Extension educational samples
    - Digital (all)
    - Physical (limited numbers)



6

## The UW-Madison PDDC Other PDDC Activities

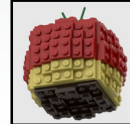
- Outreach
  - Presentations
  - Trade shows/booths
  - Mass media
- Publications
  - Fact sheets
  - Scientific publications
  - Books
- Mass media
  - Wisconsin Public Radio
  - Wisconsin Public Television



7

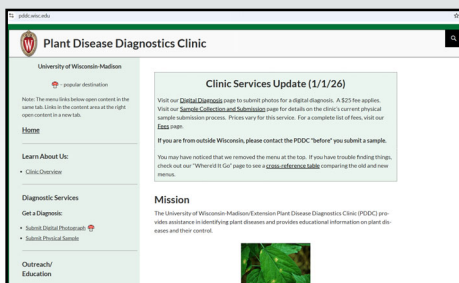
## The UW-Madison PDDC Other PDDC Activities

- Plant Disease Facts medallions
- Building block plant diseases
- Phytopath-opoly
- PDDC merchandise
- Plant Pathology outdoor laboratory



8

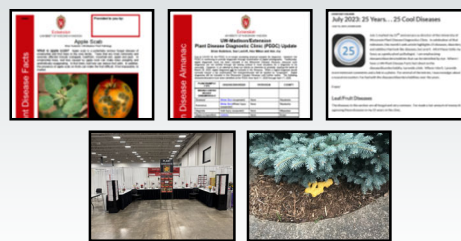
## The UW-Madison PDDC PDDC Website



- <https://pddc.wisc.edu>

9

## The UW-Madison PDDC Social Media



- Facebook, Twitter (X), Bluesky (@UWPDDC)
- UWPDDCLearn



10



## The UW-Madison PDDC Questions?



Plant Disease Diagnostics Clinic  
Department of Plant Pathology  
University of Wisconsin-Madison  
1630 Linden Drive  
Madison, WI 53706-1598  
(608) 262-2863  
[pddc@wisc.edu](mailto:pddc@wisc.edu)  
<https://pddc.wisc.edu>

Follow on Facebook, Twitter (X), Bluesky: @UWPDDC  
Subscribe to the PDDC Listserv: UWPDDCLearn

11