

## County Extension Support Staff Meeting

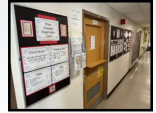
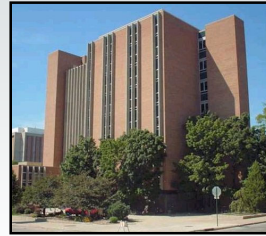
### Fun and Games at the PDDC!

**Brian D. Hudelson**  
Department of Plant Pathology  
University of Wisconsin-Madison/Extension



## Fun and Games at the PDDC!

### Location



- Russell Labs
- Labs: Rm. 183, Rm. B37
- Office: Rm. 290

## Fun and Games at the PDDC!

### Staff

- Brian Hudelson (Director/Diagnostician)
- Dante Tauscheck (Assistant Diagnostician)
- Dixie Lang (IT/website/social media support)



## Fun and Games at the PDDC!

### Diagnostic Services

- Sample types
  - Digital photos
  - Physical samples
- Diagnostic methods
  - Classical (culturing, moist chambers, microscopy, bioassays, etc.)
  - Serological (dip sticks, ELISA)
  - Molecular (PCR, DNA sequencing, cloning)
- Reporting methods
  - Email (digital photos)
  - Written letter (physical samples)
  - Phone (critical diagnoses)



## Fun and Games at the PDDC!

### Diagnostic Fees

- Digital diagnosis fee: \$25
- Base fee: \$30
- Culturing fee: \$5 per medium per plant part
- Serological test fees
  - Dip stick: \$12
  - ELISA: \$40
- DNA/RNA test fees
  - \$40 for the first PCR reaction (includes extraction costs)
  - \$20 for each additional PCR reaction
  - \$40 for DNA sequencing



## Fun and Games at the PDDC!

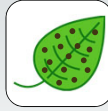
### Diagnostic Fees

- Free diagnostics: \$0
  - High economic impact disease samples: late blight
  - New/emerging/regulated disease samples
    - Boxwood blight
    - Red star rust (Japanese apple rust/lipstick rust)
    - Sudden oak death/Ramorum blight
    - Ralstonia wilt
  - Needs-based samples
    - Individuals
    - Schools
    - Non-profits
  - Extension educational samples
    - Digital (all)
    - Physical (limited numbers)



## Fun and Games at the PDDC! Diagnostic Samples

- **Total samples 2024: 1349**
  - Trees and shrubs: 56%
  - Vegetable: 18%
  - Herbaceous ornamentals: 11%
  - Fruit: 10%
  - Field and forage: 4%
  - Miscellaneous: < 1%
  - Specialty crops: < 1%
  - Soil: < 1%



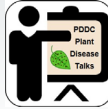
## Fun and Games at the PDDC! Instruction

- **PP559: Diseases of Economic Plants (Ornamentals)**
- **PP300: Introduction to Plant Pathology (Diagnostics)**
- **PP699: Plant Disease Diagnostics Clinic Practicum**
- **PP590: Plant Pathology Capstone**
- **PP354: Diagnosing and Monitoring Pest and Nutrient Status of Field Crops**
- **PP558: Biology of Plant Pathogens**
- **PP875: Special Topics (Agricultural Oomycetes)**
- **PP990: Research**
- **Hort334: Greenhouse Production of Ornamental Plants**
- **Hort375: Special Topics**
  - Planting for a Greener World
  - Arboriculture and Landscape Maintenance
- **Farm and Industry Short Course: Plant Diseases**



## Fun and Games at the PDDC! Outreach Programs

- **Oral presentations**
  - On request programming
    - Master Gardener
    - Ornamental horticulture (consumer and commercial)
    - Fruit and vegetable (consumer)
    - Field and forage crops
  - Clinic-sponsored programming
    - 2025 PDDC Plant Disease Talks
    - Ask the Experts: A Monthly Garden and Landscape Q & A Series

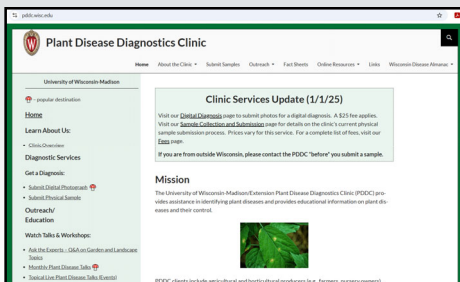


## Fun and Games at the PDDC! Outreach Programs

- **Trade shows/Booths**
  - Garden & Green Living Expo
  - Ag Research Station Horticulture Field Days
  - Professional meetings
  - All Extension Annual Meeting
- **Mass media**
  - Wisconsin Public Radio (Garden Talk with Larry Meiller)
  - Wisconsin Public Television (The Wisconsin Gardener with Shelley Ryan)

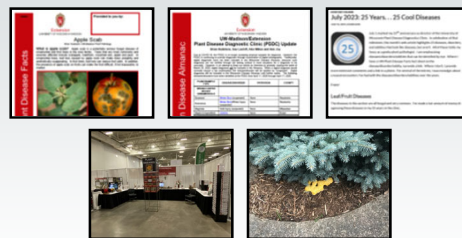


## Fun and Games at the PDDC! PDDC Website



- <https://pddc.wisc.edu>

## Fun and Games at the PDDC! Social Media



- Facebook, Twitter (X), YouTube (@UWPDDC)
- UWPDDClearn

## Fun and Games at the PDDC Publications: Fact Sheets



- Fact sheets (130+ titles)
  - Tree and shrub diseases
  - Herbaceous ornamental diseases
  - Fruit and vegetable diseases
  - Field and forage crop diseases

## Fun and Games at the PDDC Publications: Fact Sheet Medallions



### Tar Spot of Trees and Shrubs Quiz



### Tar Spot of Trees and Shrubs Quiz

Take the Quiz! Get a perfect score! Earn the medallion!

Questions may have more than one correct answer. Be sure to select all answers that are correct.

If you don't get a perfect score, you can take the quiz again until you do!

Please provide your email address to receive your digital medallion.

Reference: [Tar Spot of Trees and Shrubs Fact Sheet](#)



## Fun and Games at the PDDC! Publications: Scientific Articles



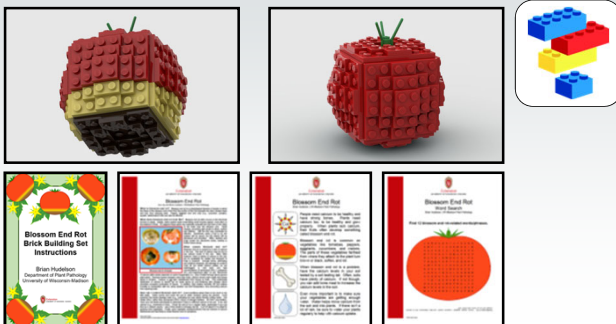
- First reports

## Fun and Games at the PDDC! Publications: Books

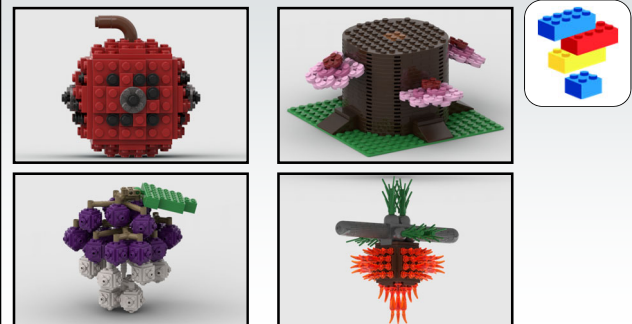


- Future titles: *Sublimerick*

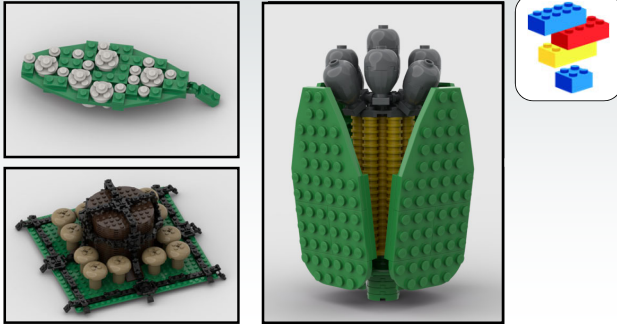
## Fun and Games at the PDDC! Building Block Plant Diseases



## Fun and Games at the PDDC! Building Block Plant Diseases



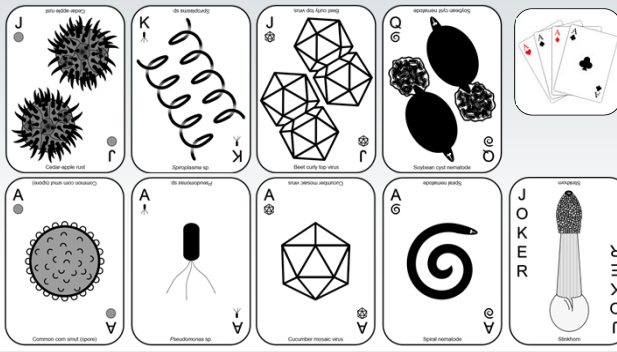
**Fun and Games at the PDDC!**  
**Building Block Plant Diseases**



**Fun and Games at the PDDC!**  
**Plant Pathology Outdoor Laboratory**



**Fun and Games at the PDDC!**  
**Games**



**Fun and Games at the PDDC!**  
**Basé Couture**



**Fun and Games at the PDDC!**  
**Questions?**

Plant Disease Diagnostics Clinic  
 Department of Plant Pathology  
 University of Wisconsin-Madison  
 1630 Linden Drive  
 Madison, WI 53706-1598  
 (608) 262-2863  
 pddc@wisc.edu  
 https://pddc.wisc.edu  
 Follow on Facebook, Twitter, YouTube: @UWPDDC  
 Subscribe to the PDDC Listserv: UWPDDCLearn