

Step-By-Step Plant Diagnostics

The University of Wisconsin-Madison Plant Disease Diagnostics Clinic

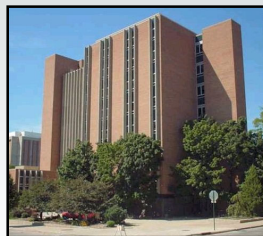
Brian D. Hudelson

Department of Plant Pathology

University of Wisconsin-Madison/Extension



The UW-Madison PDDC Location



- Russell Labs
- Labs: Rm. 183, Rm. B37
- Office: Rm. 290

The UW-Madison PDDC Staff

- Brian Hudelson (Director/Diagnostician)
- Dante Tauscheck (Assistant Diagnostician)
- Dixie Lang (IT/website/social media support)



The UW-Madison PDDC Diagnostic Services

- Sample types
 - Digital photos
 - Physical samples
- Diagnostic methods
 - Classical (culturing, moist chambers, microscopy, bioassays, etc.)
 - Serological (dip sticks, ELISA)
 - Molecular (PCR, DNA sequencing)
- Reporting methods
 - Email (digital photos)
 - Written report (physical samples)
 - Phone (critical diagnoses)



The UW-Madison PDDC Diagnostic Fees

- Digital diagnosis: \$25
- Physical sample base fee: \$30
- Culturing fee: \$5 per medium per plant part
- Serological test fees
 - Dip stick: \$12
 - ELISA: \$40
- DNA/RNA test fees
 - \$40 for the first PCR reaction (includes extraction costs)
 - \$20 for each additional PCR reaction
 - \$40 for DNA sequencing



The UW-Madison PDDC Diagnostic Fees

- Free diagnostics: \$0
 - High economic impact disease samples: late blight
 - New and emerging/regulatory disease samples
 - Boxwood blight
 - Red star rust (Japanese apple rust/lipstick rust)
 - Sudden oak death/Ramorum blight
 - Ralstonia wilt
 - Needs-based samples
 - Individuals
 - Schools
 - Non-profits
 - Extension educational samples
 - Digital (all)
 - Physical (limited numbers)



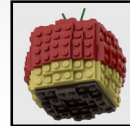
The UW-Madison PDDC Other PDDC Activities

- Outreach
 - Presentations
 - Trade shows/booths
 - Mass media
- Publications
 - Fact sheets
 - Scientific publications
 - Books
- Mass media
 - Wisconsin Public Radio
 - Wisconsin Public Television

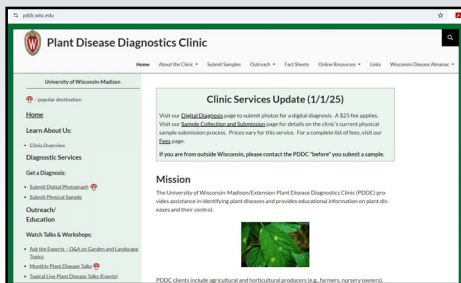


The UW-Madison PDDC Other PDDC Activities

- Plant Disease Facts medallions
- Building block plant diseases
- PDDC merchandise
- Plant Pathology outdoor laboratory

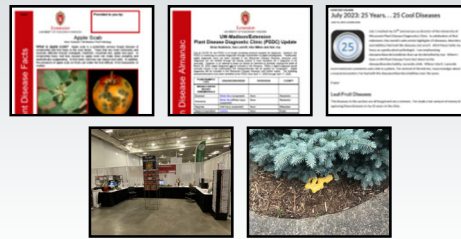


The UW-Madison PDDC PDDC Website



- <https://pddc.wisc.edu>

The UW-Madison PDDC Social Media



- Facebook, Twitter (X), YouTube (@UWPDDC)
- UWPDDCLearn



The UW-Madison PDDC Questions?



Plant Disease Diagnostics Clinic
Department of Plant Pathology
University of Wisconsin-Madison
1630 Linden Drive
Madison, WI 53706-1598
(608) 262-2863
pddc@wisc.edu
<https://pddc.wisc.edu>

Follow on Facebook, Twitter, YouTube: @UWPDDC
Subscribe to the PDDC Listserv: UWPDDCLearn