

Step-By-Step Plant Diagnostics

The University of Wisconsin-Madison Plant Disease Diagnostics Clinic

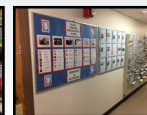
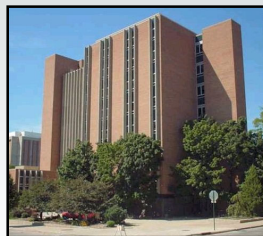
Brian D. Hudelson

Department of Plant Pathology

University of Wisconsin-Madison/Extension



The UW-Madison PDDC Location



- Russell Labs
- Labs: Rm. 183, Rm. B37
- Office: Rm. 276

The UW-Madison PDDC Staff

- Brian Hudelson (Director/Diagnostician)
- Sara deVeer (Interim Assistant Diagnostician)
- Dixie Lang (IT/website/social media support)



The UW-Madison PDDC Diagnostic Services

- Sample types
 - Digital photos
 - Physical samples
- Diagnostic methods
 - Classical (culturing, moist chambers, microscopy, bioassays, etc.)
 - Serological (dip sticks, ELISA)
 - Molecular (PCR, DNA sequencing)
- Reporting methods
 - Email (digital submissions)
 - Written report (physical submissions)
 - Phone (critical diagnoses)



The UW-Madison PDDC Diagnostic Fees

- Digital diagnosis: \$20
- Physical sample base fee: \$25
- Culturing fee: \$5 per medium per plant part
- Serological test fees
 - Dip stick: \$8
 - ELISA: \$35
- DNA/RNA test fees
 - \$35 for the first PCR reaction (includes extraction costs)
 - \$15 for each additional PCR reaction
 - \$35 for DNA sequencing

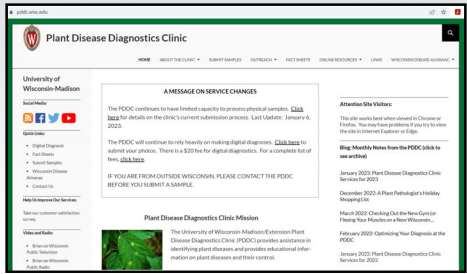


The UW-Madison PDDC Diagnostic Fees

- Free diagnostics: \$0
 - High economic impact disease samples: late blight
 - New and emerging/regulatory disease samples
 - Lipstick rust
 - Boxwood blight
 - Sudden oak death/Ramorum blight
 - Ralstonia wilt
 - Needs-based samples (from individuals, schools, non-profits)
 - Educational samples (for Extension staff/diagnostic volunteers)



The UW-Madison PDDC Website



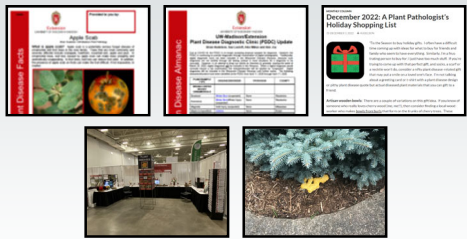
- <https://pddc.wisc.edu>

The UW-Madison PDDC Outreach Programs

- Oral presentations
 - Master Gardener
 - Ornamental horticulture (consumer and commercial)
 - Fruit and vegetable (consumer)
 - Field and forage crop
- Workshops and clinic tours
- Booths
 - Garden & Landscape Expo
 - Agricultural Research Station field days
 - Professional meetings
- Wisconsin Public Radio and Television

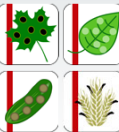


The UW-Madison PDDC Social Media et al.



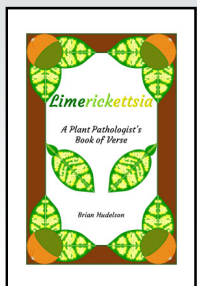
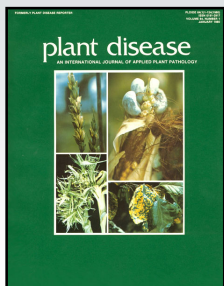
- Facebook, Twitter, YouTube (@UWPDDC)
- UWPDDCLearn

The UW-Madison PDDC Publications

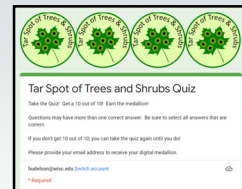


- Fact sheets (130 titles)
 - Tree and shrub diseases
 - Herbaceous Ornamental Diseases
 - Fruit and Vegetable Diseases
 - Field and Forage Crop Diseases

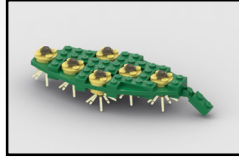
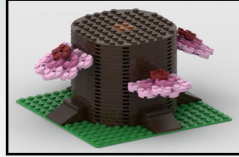
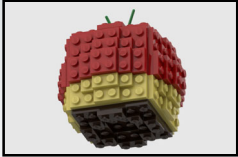
The UW-Madison PDDC Publications



The UW-Madison PDDC Fact Sheet Medallions



The UW-Madison PDDC
Building Block Plant Diseases



The UW-Madison PDDC
Plant Pathology Outdoor Laboratory



The UW-Madison PDDC
Questions?

Plant Disease Diagnostics Clinic
Department of Plant Pathology
University of Wisconsin-Madison
1630 Linden Drive
Madison, WI 53706-1598
(608) 262-2863
pddc@wisc.edu
<https://pddc.wisc.edu>
Facebook, Twitter, and YouTube @UWPDDC
Subscribe to the PDDC Listserv: UWPDDCLearn