

*Wisconsin First Detector Network*

*Diseases to Watch for in 2017*

*Brian D. Hudelson  
Department of Plant Pathology  
University of Wisconsin-Madison/Extension*



*Diseases to Watch for in 2017  
Late Blight*



*Diseases to Watch for in 2017  
Tomato Chlorotic Dwarf*



*Diseases to Watch for in 2017  
Boxwood Blight*



*Diseases to Watch for in 2017  
Thousand Cankers Disease*



*Diseases to Watch for in 2017  
Tar Spot of Corn*



*Diseases to Watch for in 2017*  
**Basil Downy Mildew**



*Diseases to Watch for in 2017*  
**Impatiens Downy Mildew**



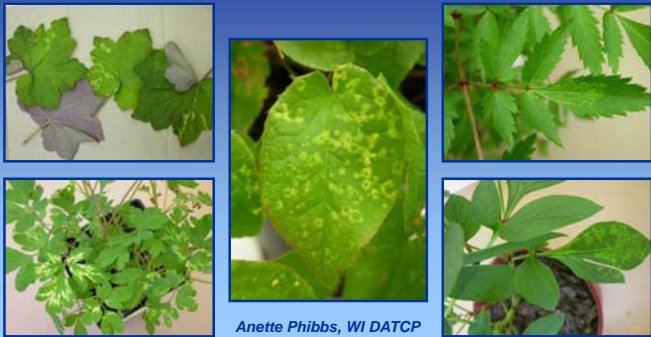
*Diseases to Watch for in 2017*  
**Sawadaea Powdery Mildew**



*Diseases to Watch for in 2017*  
**Tar Spot**



*Diseases to Watch for in 2017*  
**Tobacco Rattle**



Anette Phibbs, WI DATCP

*Diseases to Watch for in 2017*  
**How to Contact the PDDC**

*Plant Disease Diagnostics Clinic*  
*Department of Plant Pathology*  
*University of Wisconsin-Madison*  
1630 Linden Drive  
Madison, WI 53706-1598  
(608) 262-2863  
[pddc@plantpath.wisc.edu](mailto:pddc@plantpath.wisc.edu)  
<http://pddc.wisc.edu>  
Follow on Twitter @UWPDDC