

2017 NCPDN Annual Meeting

UW Plant Disease Diagnostics Clinic
Summary for 2016

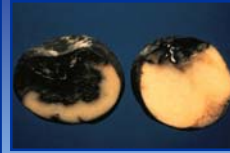
Brian D. Hudelson

Department of Plant Pathology

University of Wisconsin-Madison/Extension



PDDC Summary for 2016
Potato Black Leg/Soft Rot



- Dickeya spp.
- Pectobacterium spp.
- Clostridium spp.

PDDC Summary for 2016
Tar Spot of Corn



- Phyllachora maydis

PDDC Summary for 2016
Thread Blight of Apple



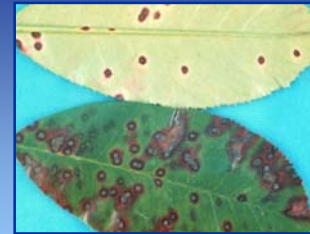
- Corticium stevensii

PDDC Summary for 2016
Bacterial Canker of Tomato



- Clavibacter michiganensis pv. michiganensis

PDDC Summary for 2016
Entomosporium Leaf Spot



- Entomosporium sp.

PDDC Summary for 2016 Hop Diseases



Viral diseases



Downy mildew



Cone blights

- [Apple mosaic virus](#)
- [Carlaviruses](#)
- [Pseudoperonospora humuli](#)
- [Alternaria alternata](#) (Alternaria cone disorder)
- [Fusarium spp.](#) (Cone tip blight)

PDDC Summary for 2016 Garlic Diseases



Garlic mosaic



Embellisia skin blotch/canker



Stem and bulb nematode

- [Unidentified potyvirus](#)
- [Embellisia allii](#)
- [Ditylenchus dipsaci](#)



PDDC Summary for 2016 Cucurbit Diseases



Plectosporium blight



Black rot/Gummy stem blight



Sour rot

- [Plectosporium tabacinum](#)
- [Didymella bryoniae](#)
- [Geotrichum candidum](#)



PDDC Summary for 2016 Clinic Update

- **Staff**
 - Brian Hudelson (Director/Diagnostician)
 - Sean Toporek → Sue Lueloff (Assistant Diagnosticians)
 - Ann Joy (Data entry)
 - Dixie Lang (IT/website/social media support)
 - Jake Kurczewski (student hourly)

PDDC Summary for 2016 Clinic Update

- **Outreach**
 - Clinic samples
 - Total: 1612
 - Commodity type
 - Vegetable: 37%
 - Trees and shrubs: 29%
 - Soil: 11%
 - Field and forage: 7%
 - Herbaceous ornamentals: 6%
 - Fruit: 6%
 - Speciality crops: 4%

PDDC Summary for 2016 Clinic Update

- **Outreach**
 - Talks: 104 (29 counties)
 - Radio and television/video
 - Garden Talk: <http://www.wpr.org/>
 - Blue Sky Science: <http://host.madison.com/wsj/>

PDDC Summary for 2016 Clinic Update

- **Outreach Activities**

- **Web and social media**

- **Website:** <https://pddc.wisc.edu/>
 - Fact sheet repository
 - Weekly summaries (*Wisconsin Disease Almanac*)
 - Monthly web articles
 - Master Gardener resource page
- **Twitter:** @UWPDDC
- **Facebook:** @UWPDDC

PDDC Summary for 2016 Clinic Update

- **Outreach Activities**

- **Fact sheets**

- *University of Wisconsin Garden Facts*
- *University of Wisconsin Farm Facts*
- *University of Wisconsin Pest Alert*
- **Total titles:** 262
- **New titles**
 - *Bacterial Speck of Tomato*
 - *Bacterial Spot of Tomato*
 - *Common Leaf Spot of Strawberry*

PDDC Summary for 2016 Clinic Update

- **Outreach Activities**

- **Fact sheets**

- **New titles**
 - *Cucumber Mosaic*
 - *Eastern Filbert Blight*
 - *Fairy Rings*
 - *Hot-Water Seed Treatment for Disease Management*
 - *Spotted Lanternfly*
 - *Stinkhorns*

PDDC Summary for 2016 Clinic Update

- **Instruction**

- **PP699:** *Plant Disease Diagnostics Clinic Practicum*
- **PP354:** *Diagnosing and Monitoring Pest and Nutrient Status of Field Crops*
- **Hort334:** *Greenhouse Production of Ornamental Plants*
- *Plant Pathology Outdoor Laboratory*