

WAA Summer Conference 2016

Tree Diseases Identifications and Treatments

Brian D. Hudelson

Department of Plant Pathology
University of Wisconsin-Madison/Extension



Tree Diseases Anthracnose



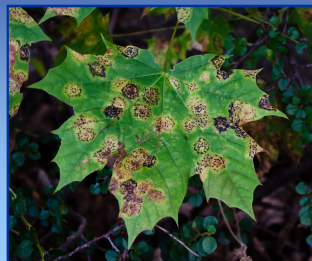
Tree Diseases Scab



Tree Diseases Rhizosphaera Needle Cast



Tree Diseases Tar Spot



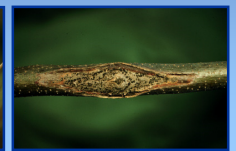
Tree Diseases Powdery Mildews



Tree Diseases "Cedar-Apple" Rusts



Tree Diseases Canker Diseases



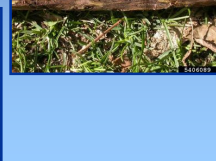
Tree Diseases Verticillium Wilt



Tree Diseases Boxwood Blight



Tree Diseases Thousand Cankers Disease



Tree Diseases How to Contact the PDDC

Plant Disease Diagnostics Clinic
Department of Plant Pathology
University of Wisconsin-Madison
1630 Linden Drive
Madison, WI 53706-1598
(608) 262-2863
pddc@plantpath.wisc.edu
<http://pddc.wisc.edu>
Follow on Twitter @UWPDDC