



Extension

UNIVERSITY OF WISCONSIN-MADISON

Provided to you by:

University of Wisconsin Garden Facts

Conifer Disease Quick Reference

Brian Hudelson, UW-Madison Plant Pathology



Root and Crown Rots

Hosts: All conifers

Pathogens: *Pythium* spp., *Phytophthora* spp.,
Rhizoctonia solani, *Fusarium* spp.,
Cylindrocarpon spp.

For more information see: UW Garden Facts XHT1070

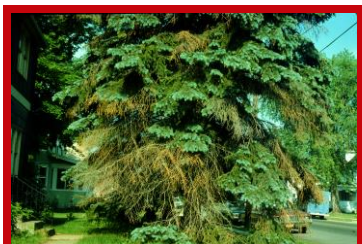


Rhizosphaera Needle Cast

Hosts: Colorado blue spruce, other spruces, many other conifers

Pathogen: *Rhizosphaera kalkhoffii*

For more information see: UW Garden Facts XHT1006
Extension Bulletin A2640



Cytospora Canker

Host: Colorado blue spruce, other spruces

Pathogen: *Cytospora kunzei*

For more information see: UW Garden Facts XHT1003
Extension Bulletin A2639



Spruce Needle Drop

Hosts: Spruces

Pathogen: Unknown (thought possibly to be
Setomelannoma holmii)



Gymnosporangium Rusts

Hosts: Junipers

Apple, crabapple, hawthorn, quince

Pathogen: *Gymnosporangium* spp.

For more information see: UW Garden Facts XHT1009
Extension Bulletin A2598



Phomopsis Tip Blight

Host: Junipers

Pathogen: *Phomopsis juniperovora*

For more information see: UW Garden Facts XHT1099



Extension

UNIVERSITY OF WISCONSIN-MADISON



Diplodia Shoot Blight and Canker

Hosts: Pines (Austrian, red, jack, Scots, mugo), many other conifers

Pathogen: *Diplodia* spp.

For more information see: UW Garden Facts XHT1010
Extension Bulletin A3643



Dothistroma Needle Blight

Hosts: Pines (Austrian, red, Scots, mugo, ponderosa, and others)

Pathogen: *Dothistroma pini*

For more information see: UW Garden Facts XHT1078
Extension Bulletin A2620



Drought Stress

Hosts: All conifers

Cause: Insufficient water



Winter Injury

Hosts: All conifers, particularly yews and junipers

Cause: Dehydration over the winter

For more information see: UW Garden Facts XHT1239



Herbicide Damage

Hosts: All conifers

Cause: Exposure to a growth regulator herbicide such as 2,4-D or dicamba

For more information see: UW Garden Facts XHT1004
UW-Extension Bulletin A3286

For more information on conifer diseases: Contact your county Extension agent.