



Extension

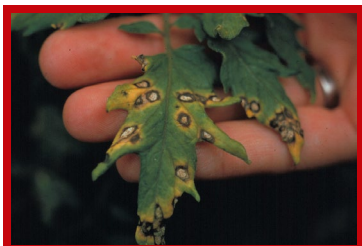
UNIVERSITY OF WISCONSIN-MADISON

Provided to you by:

# Plant Diseases to Watch For in 2021

Brian Hudelson, UW-Madison Plant Pathology

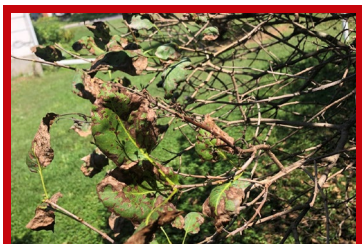
## UW Plant Disease Facts



### Septoria Leaf Spot and Early Blight

**Host:** Tomato**Pathogens:** *Septoria lycopersici* and *Alternaria solani***Signs/Symptoms:** Spotting and eventual total collapse of leaves working from the bottom of the plant up**For more information see:** UW Plant Disease Facts [D0100/46](#)

### Late Blight

**Hosts:** Tomato, potato**Pathogen:** *Phytophthora infestans***Signs/Symptoms:** Water-soaked spots on leaves, leathery areas on tomato fruits, rapid plant death**For more information see:** UW Plant Disease Facts [D0068](#)

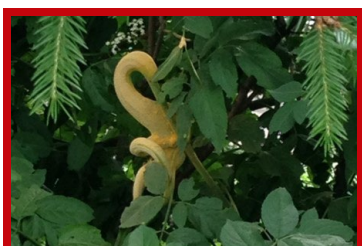
### Septoria Leaf Spot of Lilac

**Host:** Lilac**Pathogen:** *Septoria* sp.**Signs/Symptoms:** Dead spots on leaves, potentially leading to complete leaf browning

### Rhizosphaera Needle Cast

**Hosts:** Colorado blue spruce, other spruces**Pathogen:** *Rhizosphaera kalkhoffii***Signs/Symptoms:** Browning/purpling of interior needles of lower branches, followed by needle drop**For more information see:** UW Plant Disease Facts [D0093](#)

### Gymnosporangium Rusts

**Hosts:** Juniper, apple, crabapple, hawthorn, quince**Pathogen:** *Gymnosporangium* spp.**Signs/Symptoms:** Brown blobs with orange gelatinous masses (juniper); yellow/orange leaf spots (other hosts)**For more information see:** UW Plant Disease Facts [D0058](#)

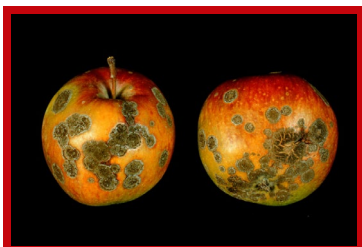
### Elderberry Rust

**Hosts:** Elderberry**Pathogen:** *Puccinia sambuci***Signs/Symptoms:** Light yellow, powdery growths on branches**For more information see:** UW Plant Disease Facts [D0049](#)



Extension

UNIVERSITY OF WISCONSIN-MADISON



## Scab (Apple and Pear)

**Hosts:** Apple, crabapple, pear, mountain-ash

**Pathogens:** *Venturia inaequalis*, *Venturia pirina*

**Signs/Symptoms:** Feathery-edged spots on leaves and fruits often leading to leaf loss and tree defoliation

**For more information see:** UW Plant Disease Facts [D0004](#)



## Bur Oak Blight

**Host:** Bur oak

**Pathogen:** *Tubakia iowensis*

**Signs/Symptoms:** Wedge-shaped dead areas on leaves leading to dead leaves that stay attached to trees



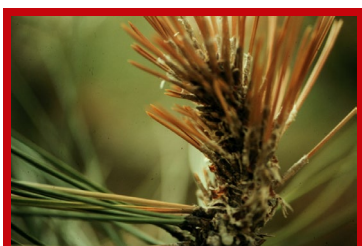
## Powdery Mildew

**Hosts:** Herbaceous and woody ornamentals, fruits, vegetables, turf

**Pathogens:** Miscellaneous powdery mildew fungi

**Signs/Symptoms:** Powdery white growth on leaves

**For more information see:** UW Plant Disease Facts [D0084/86/87](#)



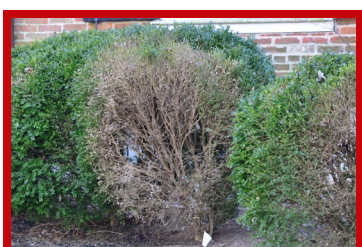
## Diplodia Shoot Blight and Canker

**Hosts:** Austrian pine, other pines

**Pathogen:** *Diplodia* spp.

**Signs/Symptoms:** Dieback of branch tips with dead needles showing uneven lengths

**For more information see:** UW Plant Disease Facts [D0042](#)



## Boxwood Blight

**Host:** Boxwood

**Pathogen:** *Calonectria pseudonaviculata*

**Signs/Symptoms:** Circular, brown leaf spots followed by leaf drop and shrub death

**For more information see:** UW Plant Disease Facts [D0023](#)

**For more information on plant diseases to watch for:** See <https://pddc.wisc.edu/> or contact the University of Wisconsin Plant Disease Diagnostics Clinic (PDDC) at (608) 262-2863 or [pddc@wisc.edu](mailto:pddc@wisc.edu).

© 2021-2024 by the Board of Regents of the University of Wisconsin System doing business as the Division of Extension of the University of Wisconsin-Madison.

An EEO/Affirmative Action employer, University of Wisconsin-Madison provides equal opportunities in employment and programming, including Title IX and ADA requirements. This document can be provided in an alternative format by calling Brian Hudelson at (608) 262-2863 (711 for Wisconsin Relay).

Thanks to Diana Alfuth, Margaret Murphy and Denise Worzalla-Rocha for reviewing this document.

Thanks also to Amanda Gevens (late blight), Marissa Wilmot (Septoria leaf spot of lilac), Jenell Bintl (elderberry rust), Lina Rodriguez-Salamanca (bur oak blight) and David Clement (boxwood blight) for use of their photos.

A complete inventory of UW Plant Disease Facts is available at the University of Wisconsin-Madison Plant Disease Diagnostics Clinic website: <https://pddc.wisc.edu>.

Submit additional lawn, landscape, and gardening questions at <https://hort.extension.wisc.edu/ask-a-gardening-question/>.