



Extension

UNIVERSITY OF WISCONSIN-MADISON

Provided to you by:

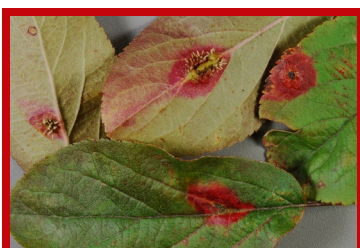
# Plant Problems to Watch for in 2022

Brian Hudelson, UW-Madison Plant Pathology

## UW Plant Disease Facts



### Boxwood Blight

**Host:** Boxwood**Pathogen:** *Calonectria pseudonaviculata***Signs/Symptoms:** Circular, brown leaf spots followed by leaf drop and shrub death**For more information see:** UW Plant Disease Facts [D0023](#)

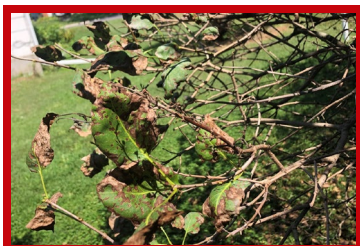
### Lipstick Rust

**Hosts:** Chinese juniper, apple, crabapple**Pathogen:** *Gymnosporangium yamadae***Signs/Symptoms:** Brown blobs with orange gelatinous masses (juniper), red leaf spots (apple, crabapple)

### Late Blight

**Hosts:** Tomato, potato**Pathogen:** *Phytophthora infestans***Signs/Symptoms:** Water-soaked spots on leaves, leathery areas on tomato fruits, rapid plant death**For more information see:** UW Plant Disease Facts [D0068](#)

### Septoria Leaf Spot and Early Blight

**Host:** Tomato**Pathogens:** *Septoria lycopersici* and *Alternaria solani***Signs/Symptoms:** Spotting and eventual total collapse of leaves, working from the bottom of the plant up**For more information see:** UW Plant Disease Facts [D0100/46](#)

### Septoria Leaf Spot of Lilac

**Host:** Lilac**Pathogen:** *Septoria* sp.**Signs/Symptoms:** Dead spots on leaves, potentially leading to complete leaf browning

### Wood Rots

**Hosts:** Woody trees and shrubs**Pathogens:** Miscellaneous wood rot fungi**Signs/Symptoms:** Shelf-like growths on trunks and branches



Extension

UNIVERSITY OF WISCONSIN-MADISON



## Canker Diseases

**Hosts:** Woody trees and shrubs

**Pathogens:** Miscellaneous canker fungi

**Signs/Symptoms:** Sunken areas on trunks/branches

**For more information see:** UW Plant Disease Facts [D0027](#), [D0037](#), [D0042](#), [D0055](#), [D0074](#), [D0114](#)



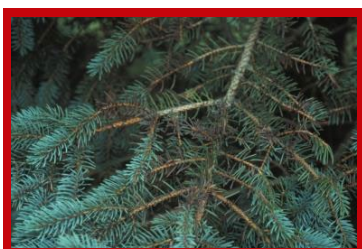
## Virus Diseases

**Hosts:** All plants, particularly herbaceous ornamentals

**Pathogen:** Miscellaneous plant viruses

**Signs/Symptoms:** Blotchy leaf color, growth distortions

**For more information see:** UW Plant Disease Facts [D0036](#), [D0063](#), [D0067](#), [D0115](#), [D0116](#), [D0130](#)



## Rhizosphaera Needle Cast

**Hosts:** Colorado blue spruce, other spruces

**Pathogen:** *Rhizosphaera kalkhoffii*

**Signs/Symptoms:** Browning/purpling of interior needles of lower branches, followed by needle drop

**For more information see:** UW Plant Disease Facts [D0093](#)



## Chlorosis

**Hosts:** Pin oak, red maple, birch, azalea, white pine, blueberry

**Pathogen:** None

**Signs/Symptoms:** Yellow leaves with dark green veins

**For more information see:** UW Plant Disease Facts [D0084](#)



## Improper Planting

**Hosts:** Woody trees and shrubs

**Pathogen:** None

**Signs/Symptoms:** No root flare at the soil line, girdling roots, frost cracks, canopy thinning, early fall color, branch dieback, tree/shrub decline and death

**For more information on plant problems to watch for:**  
See <https://pddc.wisc.edu/> or contact the University of Wisconsin Plant Disease Diagnostics Clinic (PDDC) at (608) 262-2863 or [pddc@wisc.edu](mailto:pddc@wisc.edu).

© 2022-2024 by the Board of Regents of the University of Wisconsin System doing business as the Division of Extension of the University of Wisconsin-Madison.

An EEO/Affirmative Action employer, University of Wisconsin-Madison provides equal opportunities in employment and programming, including Title IX and ADA requirements. This document can be provided in an alternative format by calling Brian Hudelson at (608) 262-2863 (711 for Wisconsin Relay).

Thanks to Julie Hill, Jeannie Manis and Carol Shirk for reviewing this document.

Thanks also to David Clement (boxwood blight), Nancy Gregory-University of Maryland (lipstick rust), Amanda Gevens (late blight), Marissa Wilmot (Septoria leaf spot of lilac), and Diane Malchow (wood rots) for use of their photos.

A complete inventory of UW Plant Disease Facts is available at the University of Wisconsin-Madison Plant Disease Diagnostics Clinic website: <https://pddc.wisc.edu>.

Submit additional lawn, landscape, and gardening questions at <https://hort.extension.wisc.edu/ask-a-gardening-question/>.